

Guild at a Glance

South Vancouver Island Potters' Guild meets the 2nd Monday of the month at 4733 West Saanich Road, Victoria

December 8, 2014

www.victoriapotters.ca

Volume 16 Issue 4

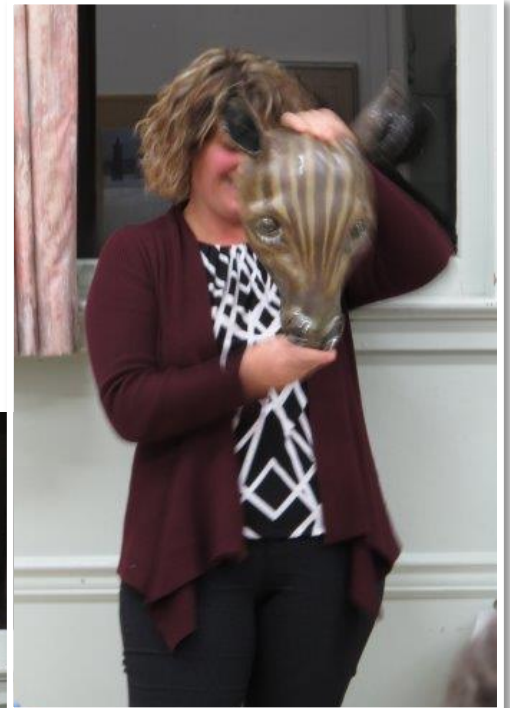
'NEW' SVIPG Members – Getting to know them

Three relatively new potters – who have come back to or started potting in the last year or two - showed their work and talked about their inspiration.



Michale F. started potting about 18 months ago. She uses Plainsman 370 clay. She attended the Bob Kingsmill workshop, was very impressed, making a mask of her own as a result. She attended the Chinese Painting workshop and brought in samples of her completed works. She has a love for experimentation and is not afraid to try new things. Michale is experimenting and mixing her own glazes. Her experimentations have not always proved successful i.e. exploding pots and this has not dampened her enthusiasm to try new things. She is looking a learning to spray pots and trying silicon carbide on pots.

Louise B. attends the Cedar Hill Rec Centre where she also learned about the Guild. She is an Emergency Management Training Specialist when not up to her elbows in mud. She started potting in January 2014 and became excited by the pieces she made in her first class. Nancy Alexander and Michael Giles have been her teachers. She has a studio set up at home with her own kiln. She enjoys doing platters and masks. She states that she likes a challenge and uses antique forms as inspiration. She is experimenting with using glass and finds a 30 – 40% failure rate, which she is trying to reduce. She would also like to try reduction firing. She asked the Guild members about preventing warping. Suggestions from those present included using bisque cookies and alumina hydrate to allow the pieces to move freely on the kiln shelf.



Our next meeting will be
January 12, 2015

We meet at:
7:30 at St. Michael's
Anglican Church
4733 West Saanich Road

***Don't forget the
Raffle !***



*Continued
on page 2*

Nancy F is a web development and marketing consultant. She is Semi retired. She learned to pot initially on a vacation in Tuscany 20 years ago and has looked for opportunities to start again. In February 2014 she went back to the studio. She feels fortunate to have both a gas and electric kiln in her set up and her favourite creations are bowls of a variety of sizes. She uses Shino and Randy's Red glazes. One of the challenges for Nancy is the decorating process and is experimenting with stencils. Recently she had an experience with Saggar Firing and would like to do more of it.



To follow-up with last month's program, Derek Kaspers brought in the finished pieces he demonstrated last month. The Bowl (Baby Bath) made with Mount Baker White stoneware suffered from some issues of shailing and will become a garden piece. The Fluted bowl was made with B Mix clay and thrown thin to accommodate alteration without the ability to trim. He glazes using a recipe for Eggplant glaze with the colorant removed and then adds his own colorant to create satin matt yellow and turquoise. He spray glazed the piece and was able to get variations in the colour, by only hitting the high spots with the second glaze. Derek has offered to share his glaze recipe with the Guild members.

text written by Daniel, photos by Rosemary

Coming in January – Meira Mathison - *Influences*

A visual journey outlining my 35 plus years of working with clay.

"Finding your own voice and style in clay is one of the most difficult aspects of potting.

This presentation follows the influences that have given my porcelain work a unique style and look."



A Note About Our Annual Sale

The SVIPG sale will be on Saturday June 13th 2015 from 10am until 3pm at the Fairfield Community Centre (Garry Oak Room), including the grassy area outside, next to the Moss Street market. All guild members are eligible to have a table or to share a table at the sale. Application forms will be emailed shortly after the January guild meeting. Once you have received the form, you are encouraged to get your application in. As the applications are received, they will be numbered and the table assignments will be done in mid February by lottery starting with the first application received.

The deadline for the applications will be the February meeting.

I want to thank those who offered to help with various aspects of the sale. You will be contacted in the New Year.

Let's all work towards another successful sale.

Libby Wray
eswray@shaw.ca
250-881-4461

**How many times
have you been
asked this ?**

**Thank you Joy for
one answer.**

What's yours ?



Mug at Hot Frog - photo on bing

What Goes Into Making a Mug?

(so glad you asked!!)

1. Pick up clay - 7 hour round trip in ideal conditions. OR pay \$\$\$ to get it delivered.
2. Unload truck - load clay into basement studio.
3. Weigh out amount needed.
4. Wedge (knead) clay.
5. Centre clay on wheel and throw the mug shape.
6. Remove from wheel and let dry 24-48 hours, depending on humidity.
7. Put mug back on wheel and trim.
8. Hand-create handle.
9. Let handle dry 1 to 5 hours, depending on humidity.
10. Attach handle to trimmed mug.
11. Cover handle in hot wax to slow drying on very dry days.
12. Let mug dry 1 week minimum. If mug cracks at this point, re-cycle clay and start over at step 3.
13. Take mug to kiln and fire to ~1800 F - about 15 hours.
14. Take mug back to the studio for glazing. If mug has cracked during 1st firing, discard and write off.
15. Mix glaze(s). Each glaze requires approximately 3 hours to mix and sieve.
16. Put hot wax on the bottom of mug so it does not stick to kiln shelf.
17. Choose design and glaze mug. This can be a quick dip - or an elaborate design taking an hour or more to create.
18. Let mug dry thoroughly.
19. Bring mug back to the kiln and place gently within the kiln. If glaze scratches or gets bumped on journey, wash with hot water, let dry, and start back at step 13.
20. Fire glazed mug to approx 2150F; approximately 24-28 hours depending on electricity demands.

21. Hold at peak temperature for approx. 20-30 minutes. Make sure all shelves reach the same temperature (cone); then slowly fire down.
22. Wait around 14 hours for kiln to cool to under 400F before opening.
23. Remove and check mug. If cracked, write off. Start over at step one.
24. If mug has miraculously survived to this point, clean sharp bits off bottom with grinding stone by hand, and put out for sale (!)
25. Last, but certainly not least instruction; try not to bite off the head of the foolish person who innocently asks, "Why does this mug cost so much?"

AND, let us not forget all the hidden steps not numbered in here

- answer phone
- pay B.C. Hydro
- develop new glazes and slips
- come up with new pots and ideas
- pay B.C. Hydro
- put out signs on road
- have MTO take signs off road
- re-cycle clay trimmings
- attend conferences
- read Clayart
- answer questions where appropriate

Thank you for your time and attention.

P.S. Also plenty of love and satisfaction upon seeing that small lump of clay actually transformed into something very useful in this chaotic world. So much of what we cherish comes off a shelf in a store with no concept of how it got there. We are happy to tell you how we get a lump of clay into a pleasing mug to hold your beverage in.

Jo-anne Payne recently demonstrated slip-trailing to a group of local potters (Nov. 2014).

Joy says: "it looked so easy!"

Just mix up a slip using 10% black stain with trimmings from the clay you are using. Strain it.

And here's the neatest trick: (1) Snip a tiny piece off one of the bottom corners of a plastic sandwich bag, (2) insert the nozzle used for icing cakes, (3) put slip into plastic bag, and squeeze away, just like icing a cake. Hold the tip slightly above the surface and keep trailing."



Oops ... i slipped

Photo by Rachel, text submitted by Joy

Some tips on slip trailing from a potter that has 'slipped up' many times but, with a little persistence has come to enjoy this process and the relaxed, fluid feel it gives her pots.

1. Make piece fairly thick
2. Apply the slip as soon after making as possible to avoid cracks (There are recipes for applying slip to bisque and one day, when I have more 'play' time I will try this).
3. Unless its really thin, limit slip to the outside of the piece.
4. If you slip is a little too thin it can be thickened by adding 1-2 drops of epon salt water (1 tablespoon to 2 cups hot water).
5. Any sharp points that result from trailing can be pressed down with a finger about ½ hour after trailing.
6. Wrapping the slip-trailed pots in dry cleaner's plastic for 1-2 days will help to even out the drying of the trailing and the pot.
7. If you don't like what you've trailed, simply wipe the slip off with a damp sponge.
8. I usually trim as soon as I can (before trailing) or slip first then do a little trimming when pot is leather hard.
9. To start out, get a sheet of newspaper to practice on - put on some music, have a drink of wine to loosen up and go for it! **Have fun!**

reprinted with permission of
Jo-anne Payne

The Red Gate Pottery

Hello from Puerto vallarta Mexico where I have a new studio/taller called Red Gate pottery/Ceramica Puerta Roja.

It's a lovely space with doors to the street (the above mentioned red gates), a little back patio, a kitchen sink from the former little restaurant and even a bathroom.

Half the electrical is now working so I can be throwing, but the kiln and the ceiling fan still need attention.

May I say that we wear shorts every day.

Hope everyone is well and thriving, enjoying making and getting ready for the shows.

Joan Kagan jekagan@telus.net



Rosemary At The Archie Bray Centre

Decided to go to Montana in September, and for no particular reason other than convenience, flew into Helena. And were very glad we did, because I discovered the Archie Bray centre, familiar to many of you but completely new to me.

Located on ten hectares just outside Helena, the centre, home to the Archie Bray Foundation for the Ceramic Arts, was founded in 1951 by brick maker Archie Bray, as a place for serious ceramicists to work and study. For those who want to stay a while, it offers classes, workshops and residencies. For meanderers like me, its charm lies in the statuary and other ceramics scattered around the grounds. Artists and artisans who come to the centre leave behind them some of their best work and some of their rejects, so you will happen upon a ceramic dog in the grass, a ceramic angel standing with arms outstretched back behind the kilns, a group of three elongated figures taking tea in the shade beside a wall, and a plethora of other art that amuses, inspires and teaches. It was easy to spend an hour or two there on our way out, and it drew us back again when we returned to Helena for our flight home.

The grounds house studios, kilns of many sizes and purposes, the old brick kilns (some of which have been refurbished and are in use once more), a small store jam-packed with everything from glaze materials to tools, and several galleries, where you will frequently find ceramic exhibitions.

Well worth a visit in person, or check it out on-line at <http://archiebray.org/>.

.... and a note from the editor:

Rosemary has more fabulous photos but I had no more room to use them.

Contact me (eartharts@shaw.ca) or Rosemary (rnearing@shaw.ca) to see them.



Guild at a Glance

... is the newsletter for the South Vancouver Island Potters Guild.

It is published monthly, September through June, and is available at meetings and online at www.victoriapotters.ca

Articles and items of interest to members are welcome and will be included as space permits.

Items for inclusion are best emailed to the editor, Louise, at eartharts@shaw.ca

SUBMISSION DEADLINE IS NOON THE FIRST MONDAY OF EACH MONTH

The earlier submissions are received, the more likely there will be room to include them. Be kind to the editor, please send items for inclusion *before* the deadline.

Your 2014-2015 Executive

President:	Muriel S.	250.652.5434
Vice-Pres:	Pam T-W	1.250.474.5434
Secretary:	Derek K.	250.995.2905
Treasurer:	Linda V.	250.479.5966
Archivist:	Dawn K.	250.896.4373
Coffee:		
	Monika B.	778.351.3988
	Katia C.	250.472.8225
	Hillary G.	778.425.4228
Library:		
	Nancy W.	250.479.3524
	Kriss J.	250.384.5344
	Belle Leon	250.382.1326
Membership:	Betty B.	250.382.0974
Newsletter	Louise P.	250.655.3811
Program Coordinators:		
	Rosemary N.	250.477.7032
	Angela P.	250.580.8884
	Muriel S.	250.652.5434
Raffle:		
	Ester G.	250.658.4523
	Tobias T.	250.383.3893
Webmaster:	Deb.C	250.664.6805



Victoria Clay Art

654 Burnside Road W.
Victoria BC V8Z 1M8
250 384-3831
vcart@shaw.ca

Here is a list of my favorite pottery tools, glazes and things. Dan

All available at Victoria Clay Art

Mud Tool Ribs
Amaco PC-20 Blue Rutile [cone 6]
Alphabet Stamp Set
2" Goat Hair Fan Brush
Magic Water
Stroke & Coat SC-74 Hot Tomale [cone 08-10]
MKM Finger Rollers
Xiem Telescoping Sponge on a Stick
Mud Tool Blue Sponge
Amaco Velvet Underglaze V-361 Jet Black
Aardvark Cone 5 BEE-Mix
Mud Tool Clay Cutting Wire [green handle]
MKM Wood Stamps
Paper Clay cone 06, 6, or 10

**Come in and look around, we're open
10:00am to 5:00pm Mon-Sat**

ADVERTIZING RATES

Business card size (2" x 3 1/2"):
\$10 per issue
or
\$75 for 10 issues

Quarter page ad (3 1/2" x 4 3/4")
\$20 per issue
or
\$150 for 10 issues

Sales announcements, events, classified ads:

FREE

contact the *At a Glance* editor at:
eartharts@shaw.ca

Pottery @ Greenglade Community Centre



Winter Courses & Workshops for all ages from tots to 60 years+.

Drop-in times also available.



250.656.7271

www.panoramarecreation.ca

Vancouver Island Potters Supply

Your top source for pottery supplies on Vancouver Island

Now 4 convenient ways to shop!

In person Monday to Friday 9 am – 4 pm

By phone 250-248-2314

Email vipsclay@hotmail.com

Fax 250-248-2318



Visit our website at:
www.vipottersupply.com

#2 1009 Herring Gull Way
Parksville, BC, V9P 2N1
Open Monday to Friday
9 am – 4 pm

Denys James Discovery Art Travel

DISCOVER MYANMAR (BURMA) 2015, January 28 - February 13

Specialty Small Group Art Travel

Save \$100 - register before July 31, 2014

www.discoveryarttravel.com denys@denysjames.com
1-250-537-4906



Burma: Appreciate the History, Warmth and Beauty of Old Asia

Upcoming 2015 Travel Opportunities:

Burma, January 28 - February 13

Sicily, September 26 - October 14

Morocco, October 26 - November 16

... When you shop – please mention to our advertisers that you learned about them in the Guild Newsletter.