

Guild *at a* Glance

South Vancouver Island Potters' Guild meets the 2nd Monday of the month at 4733 West Saanich Road, Victoria

May 1, 2008

www.mypottery.com

Volume 8, Issue 9

In Pursuit of the Perfect Glaze



"It's a start," says Tony Mochizuki. "Keep it simple," adds Andre Gogol.

Andre Gogol and Tony Mochizuki have delved into the depths of Robin Hopper's Glaze Mastery course at MISSA and here is their story.

When Tony and Andre signed up for Robin Hopper's summer glaze course they were asked in advance to set out some goals for themselves, specifically relating to 2 glazes that they used regularly. The purpose of this was to allow each student to come to understand what gave the glazes their particular characteristics. Andre realized he would have more than he had time for with 2 glazes so he chose to work with only one -

an Oriental iron glaze. (Oriental Iron Glaze # 12 from Robin Hopper's Ceramic Spectrum).

Andre outlined the process whereby substituting one ingredient 6 times to create 6 new glazes from the original base, he came to a more clear awareness of how that ingredient worked in the glaze. Having created 6 new glazes he then did line progression tests on each new base glaze. After iron was added to each glaze the volume is divided up into increasingly larger % amounts. Each glaze would yield 6 tests showing the results of increasing the iron content.

When he realized that he wanted to test these new glazes on a surface that would tell him a little more, he admitted he had thrown, trimmed, dried and fired a



Don't Forget The Raffle!

Next Guild Meeting is
Monday, June 9, 2008
7:30 p.m. at St. Michaels Hall

number of small dishes in one evening during the course. Lots of tiles and lots of tests later Andre has returned from the fire with a number of stable, repeatable results that he likes and can use in his work. His bowls show the stunning results of a lot of patience with testing and searching.

Tony felt strongly that the course is a solid foundation for each potter's exploration of their own interests. He used the words 'new directions' to communicate the idea that this process is an ongoing one whereby we can learn how to get the results we want, how to turn generic glazes into **our** glazes, how we can find our own voice. Tony took on the full 2 glaze analysis approach. His tiles show a fortune of information, but he cautions us to take only a few promising results and work more extensively with those.

To express our own vision through our work in a fully individual way takes knowledge and skill. Tony and Andre's presentation demonstrate that these attributes are available to us all, with discipline, no matter where we are on the journey. We are truly fortunate to have gifted mentors such as Robin Hopper in our community, who are still willing to impart their knowledge and skill.

His work and all the programs at MISSA are an invaluable resource. We thank Tony and Andre for reminding us of this by their example.



Roger Champagne

**METCHOSIN INTERNATIONAL SUMMER
SCHOOL OF THE ARTS
WORKING BURSARY APPLICATION
INGE KOWAL BURSARY 2008**

The Inge Kowal Bursary is available for South Vancouver Island Potters' Guild members only so any of you may apply. You will have a creative, wonderful, memorable experience so don't wait! Courses have been filling up quickly. We are very limited in available classes but Les Manning's class is low in enrolment so I am trying to really promote ---

Les Manning teaches a class that would be very useful for any of our guild members. If you are feeling "stuck", if you want to "find your personal style" then this class would be helpful. Les will put students thru a variety of discussions, exercises and helpful suggestions to ease students into the next level of working with clay. Anyone who has taken this class will tell you how it has helped give concentrated study in a very short time period, jump starting them into new forms and ideas.

Meira Mathison



Photos by Roger Champagne

FingerPlay



Modelled after the Orton Cone Box show, the Potters Guild of British Columbia (PGBC) invited Ceramic Artists from all over British Columbia to enter a piece of work to be juried.

The only criteria is that the work be representative of their style and fit into a box no larger than 6 cubic inches. In the spirit of the playful quality of miniatures, the theme of 'FingerPlay' was chosen to encourage the artists to address their interaction with the sensual, playful and pliable material.

All ceramic artists from across BC were invited to enter their work for the exhibition, which is designed as a two-tiered project. Each entry will appear at the inaugural show scheduled to open at the Blackberry Gallery in Port Moody, BC in March 2008. A jury will then select fifty pieces from the inaugural show to tour BC during 2008. Awards will be presented for "Excellence" and for "Peoples' Choice".

Muriel Sibley, Marlene Bowman, Cathie Jefferson (no image available), and "special visitor Meg Burgess" were all accepted into the show. cheers to them all!!!!

Submitted by Tobias Tomlinson

Clockwise from right: "Sun in the Rainforest" - Marlene Bowman, "Finger Puppets" - Muriel Sibley, Meg Burgess.



“JUNE WIND-UP PARTY”AND “SWAP ‘n’ SHOP

At the June 9th Guild Meeting, we are planning a Wind-up Party, and a Swap “n” Shop.

For the Party, please bring some goodies, or finger food snacks to share. Wine and a non alcoholic punch will be provided by the Guild.

For the Swap“n”Shop please bring any pottery related items you would like to sell or swap. Bring anything you are not using from your studio such as, chemicals, clay, tools, or books. Tables will be set up for the displays. Be sure to put prices on your articles.

We are also hoping to take a GUILD GROUP PHOTO, so please come if you can, so that we can have everyone in the picture.

See you June 9th.

The Guild Executive

Upcoming events

Pacific Rim Potters Spring Show & Sale

Saturday May 10—10am-4pm. Knox Presbyterian Church Hall, 2964 Richmond Rd. Featuring work by Betty Burroughs, Peggy Elmes, Ester Galac, Darrel Hancock, Nora Lewin, Mavis Mooney, Jane Van Alderwegen, Linda Vigliotti. And Guest: Cindy Gibson

The next **Saanich West Studio Tour** takes place on the 10th and 11th of May. We are always looking for artists to join in. Questions? phone Heidi at 479-6470.

SVIPG sale June 14, St Michaels Hall, 4733 West Saanich Rd, Victoria. 10am to 4pm.

MISSA 2008 June & July 2008. Lester B. Pearson College. 391-2412 or www.missa.ca..

KELOWNA CLAY FESTIVAL 2008

August 8th - 12th, at the Rotary Centre for the Arts in Kelowna, BC

October—Souper Bowls of Hope

Phone Helen Hughes 361-0217 or email hhughes@victoria.ca

YOUR 2007-2008 EXECUTIVE

President	Nancy Wall	479-3524
Vice-Pres	Pam Wood	642-0638
Secretary	Rachel Coward	721-2976
Treasurer	Cindy Gibson	592-8257
Archivist	Roger Champagne	388-9642
Library	Joy Finlay	479-9833
	Judy Kranjc	642-5368
	Alice McLean	642-3522
	Kyoko Kusano	592-4638
	Elaine White	382-0317

Membership
Betty Burroughs 382-0974

Newsletter Committee
Betty Burroughs 382-0974
Roger Champagne 388-9642
Jane McAllister 383-6240
Tony Mochizuki 474-1532
Jocelyn Steedman 920-0196
Caryl Wilford 642-7169

Program Coordinators:
VACANT

Raffle Ester Galac 658-4523
Tobias Tomlinson 383-3893
Coffee Betty Fulton

Directors: Meira Mathison, Betty Burroughs, Betty Fulton

LIBRARY CORNER

TWO MORE NEW BOOKS!

- Shanghai Museum: Ancient Chinese Ceramics Gallery 48 pages

- Shanghai Museum: Ancient Chinese Sculpture Gallery 33 pages

Planning a trip to China? Be sure to allow several days to see all five floors of the Shanghai Museum. Jim Bullmore did just that and was so impressed he brought back two catalogue-style publications. He has donated them to our Guild Library so we may all marvel at a sampling of pottery and sculpture as developed in China over thousands of years.

See the Ceramic chronology chart at the back of the Ceramic book, Neolithic to 20th century. Our Guild may be 10 years old, while pottery itself has very ancient origins.

Thank you, Jim, for two beautiful books - next best thing to being in the galleries at the Shanghai Museum. For more, go to Google, Shanghai Museum.

Joy Finlay

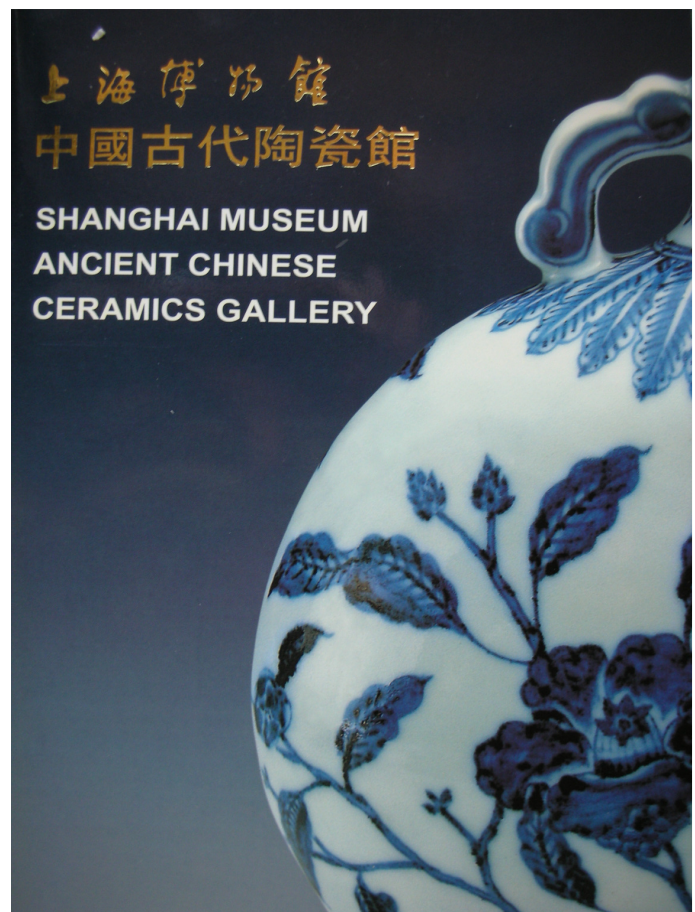
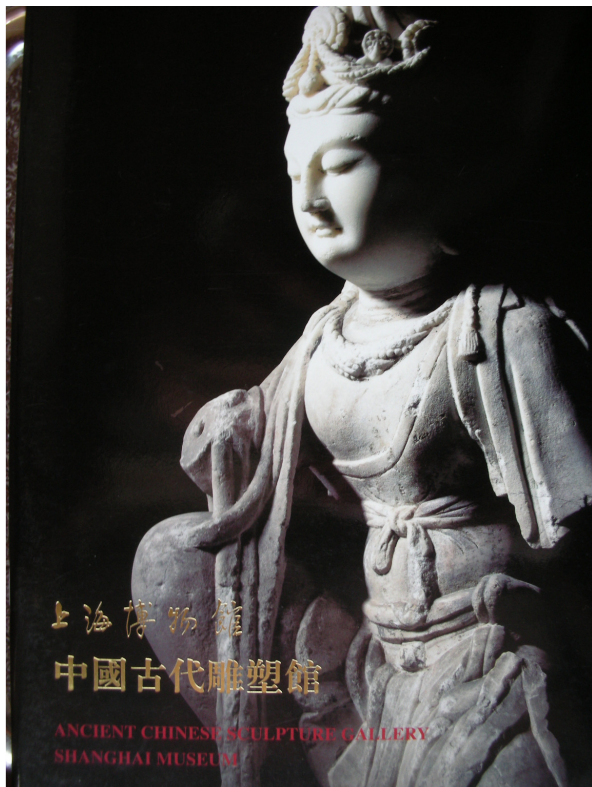


Photo by Rachel Coward

Upcoming Guild Programs

May — Alana Nast - Sm. Business Accountant

June — Swap 'n Shop & Party



JOB DESCRIPTIONS – S.V.I.P.G. (thanks to Nancy Wall for updating and editing this document)

President: The president has the easy job of preparing an agenda and chairing the guild meetings. As well she/he stays in contact with those in executive positions to see that all is going fine. Executive is composed of the major volunteer positions within the guild (pretty much everyone except Social Convenor & Raffle helpers). There's usually 2 – 3 executive meetings a year, or as deemed necessary.

Vice-President: The Vice-Pres. takes over chairing meetings when the president cannot attend. Helps at executive meetings, also by encouraging fresh ideas and being on the lookout for speakers and possible workshop ideas. Stays aware of what other local pottery guilds are doing, to see if we can share traveling presenters and/or if our guild can be involved in their workshops.

Treasurer: IN SHORT: Manage the Guild bank account; write receipts for incoming money; pay the Guild's bills by cheque, signed by two parties; oversee management of funds at events; report financial situation to membership.

Manages the bank account. Easier than your own bank account – as there are very few transactions per month. The exception is September when memberships are renewed, and June when we have the annual Sale. The account is at CIBC (Oak Bay) – you can use any branch near you. Two people sign the cheques (usually treasurer and president). There is a deposit book where everything is recorded and a photo copy of all cheques cashed is returned each month with the statement. Make deposits once a month – usually raffle and membership money, and do a reconciliation (balance) once a month.

Paying the Guild's bills is also easy. The standard ones are for hall rental (paid 2 x/year), newsletter (monthly), membership expenses & library (occasionally) and sundries like coffee. Other things we need to pay, you'd receive a bill for (i.e. insurance). Also, you write a cheque for the presenters at meetings.

Managing money for special events. *This part of the job could be shared.* Taking members fees for workshops and paying the presenter. Providing the float for shows (annual sale); sales tallies and commission calculations after a show, write cheques to pay members for their sales. Pay the pst.

Manage Receipt Book: receipts for monies paid to us. Some people need receipts, others don't care, but it is a good tool to keep track of who has paid. Make short report at monthly meetings: bank balance & what happened in the account over past month. Keep track of where money comes from and what we spend our money on. This is mainly so we have an idea how much we want to spend on things like the library. It also makes things easier when doing up a year end summary.

Year End Summary: In June or September. (year ends in June, but guild Sale calculations are not always finished, so report is presented at Sept meeting) Not absolutely necessary, but I feel we should give the membership an idea of where their dues are spent.

Membership: Taking 'attendance' at monthly meetings to ascertain if members are absent that need a Newsletter mailed (some don't have computers for online copies).. If new people want to join from April onward, the fee has been dropped to \$15.00 – unless they want to be in the annual Sale, in which case a full year fee (\$25 is required).

Purchasing envelopes /stamps (giving receipts to Treasurer for reimbursement). Take home newsletters from meetings to mail out (companies who advertise, local pottery groups and B.C. Archives). Keeping an up-to-date Membership List, in liaison with the Treasurer. Keeping other committees aware of new members & changes. Keeping a Group E-Mail List up-to-date for sending E-Mail Reminders regarding the upcoming meeting, also, notices of pottery items for Sale, Upcoming Shows, etc.. Program info. can be obtained from the Program Coordinator to send out in the E-Mail Reminder.

Preparing Nomination Forms for the June mtg., to forward to the newsletter editor, after consulting with the president re: position openings. Preparing Membership Forms, which should be available at meetings (especially in Sept./ Oct.) and can be send for inclusion in the September newsletter.

Secretary: Take and read minutes at meetings. Provide minutes to the president to draw up next months agenda. Keep a copy of all minutes in the guild record binder. Keep track of motions passed.

Program Co-coordinator (presenters for meetings): To find, arrange and facilitate presenters for guild meetings. But as I understand it, the sole responsibility of finding the presenters does not rest upon my shoulders. Finding out what type of equipment the presenter requires and accessing it. As well, introducing and thanking the presenter and giving them the honorarium cheque are part of the job. It's helpful to provide the newsletter person with details for the upcoming presentation before the deadline, so that members will be made aware of the delights awaiting them at the next meeting.

Newsletter: Duties involved: To provide a newsletter for each of the 10 meetings held. Encouraging members to send articles, pottery tips, or anything they'd like printed in the newsletter. Arranging for members to write columns in response to meeting presenters, workshops, exhibits, guild sale, and other guild gatherings, as well as staying aware of ongoing local pottery related events. Typing, layout/editing and having newsletter printed for each meeting (approx. 10 more copies than regular meeting attendees).

Archivist: Keeper of the Newsletter. Responsible for collecting the newsletter each month and filing in the Guild Binder. Photograph Album—taking or collecting photographs from Guild events, workshops, shows, as a record of yearly happenings, and taking candid photos of Guild Members at work and play. Also, recording in album, the executive and other positions of each year as the positions change. Guild Profile Binder—encouraging new members to provide a Profile of their work, for the Profile binder that is displayed at Guild Shows. Responsible for taking the Profile Book to all Guild Events.

Library: Look after the books & resources for the Guild by:

- Selecting and purchasing (yearly allotment of \$100) or receiving donations of books, magazines and videos/DVDs.
- Keeping written records, labelling, stamping and numbering of acquisitions.
- Putting out and putting away 'the library' at each meeting, for members to browse and borrow.
- Keeping track of books & resources returned (replace card into pockets) or overdue (\$5.00 fine p/mtg. overdue)
- Provide updates for the newsletter and brief report to the meetings

Library loan procedure

- Membership in guild required
- To take out book or video, sign card in pocket
- Return at next meeting or arrange a renewal until next meeting again
- Books and videos are overdue if not returned or renewed (can be renewed by phone call to librarian, unless the item is wait listed)
- Overdue fines are \$5.00 per monthly meeting missed for return.

Kitchen Convenor: Responsible for preparing coffee, tea and arranging for snacks for Guild meetings—also clean up of kitchen after meetings. Arrive about 7:00pm to start coffee urn. Urn and coffee/tea supplies are stored in closet along with guild library resources. Maintain coffee, tea, sugar, supplies together with a supply of styro cups. Purchase a pint of 2% milk to use in tea or coffee. Supplies purchased on behalf of the guild will be reimbursed on presentation of receipts to the treasurer. With the help of Sale committee organizers, arrange refreshments provided for the June sale.

Raffle: Sell raffle tickets before the mtg. begins (7:20-7:30). Purchase rolls of tickets (they last a long time so not a big job) and keep eyes/ears open for items of interest to stimulate raffle excitement. Sometimes there is a very special pottery item (i.e. \$ presenter's pottery) in which case members should be made aware of a 'separate raffle' for that one item.

Annual Sale Coordinator: With the help of a committee—organize sale location, date, details and advertising

WANTED: Guild Treasurer for SVIPG.

Duties: look after the guild bank account, give very brief financial reports at meetings and annual report at end of the year, pay the guild's bills, reimburse expenses paid by members, take membership money, attend exec meetings (one or two per year). Responsibilities are minimized by assistance of the president and the membership secretary.

As part of the executive you will be helping with the administration of your local potters guild – always a worthwhile cause!

This job is easy and rewarding. I will "retire" after my 5th annual report at the September meeting and would like to have someone ready to take over from there (of course I'll still be around for initial support if needed, but that's not likely). Please contact me (Cindy) at CGPottery@shaw.ca or 592-8257, or anyone on the executive, if you are interested.

If you can balance a cheque-book, you can do this job!



SVIPG 10TH ANNIVERSARY SHOW?

Your guild executive has been researching possibilities for a SVIPG anniversary show. Although we are only at the enquiry stage, it is difficult to get a response from venues until we decide what kind of a show we want and how much we are willing to spend. It would also be helpful to have an idea of how much space we might need.

There are several possibilities if we decide to pursue the route of an exhibition separate from our annual sale, the main two being: Commercial Galleries or Public Spaces.

Most commercial galleries will not hold shows unless all of the work is for sale. And most are quite firm on being the jurors of what is exhibited. Some are willing to show clay work only in conjunction with a show of gallery painters.

Some public spaces do not allow sales at all, and some do. Some spaces are available for rent and then you can sell or not, and set up the show how you want. Some require active participation, and some will do all the "work", for a fee.

Do we want an exhibition, and if so, what are your preferences? The survey following (next page) is for general discussion and is not binding! Please give your honest thoughts.

ST IVES, UK.

The internationally renowned Leach Pottery, in St Ives, Cornwall reopened its doors on 6 March, 2008, following a 31.7 million transformation. It is set to become an international centre of excellence celebrating the life and influence of its creator Bernard Leach. The new ceramic training and business facilities, education resources and a showcase gallery secures a legacy for the pottery in a modern setting.

A partnership between the pottery and University College Falmouth, will enable students to work alongside established craftspeople to develop their techniques. There will also be mentoring for business start-ups and studio space for emerging talent. The Pottery has scored a significant coup in attracting Jack Doherty, the chairman of the Craft Potters Association of Great Britain and the organizing committee of Ceramic Art London, as its new lead potter.

It is expected that the rejuvenated pottery and visitor attraction will host up 30,000 visitors per year. Local people from St Ives and surrounding towns and villages have also been deeply involved in bringing the Pottery back to its former glory, and working as volunteers to help run the new centre.

The Leach Pottery will once again become a place where quality work is made, young potters are inspired and trained, and visitors are introduced to the Leach heritage and the significance of ceramics in the cultural world of today.

submitted by Betty Burroughs

FOR SALE

1 Large adjustable drying rack, plywood and 2x4 construction 7'H x 5'W x 28"D \$350.00

1 2-level canvas covered wedging table, very sturdy, built with 4"x4" legs 32"H x 50"W x 32"D \$300.00

1 Professional work bench steel legs, hardwood top, 2 vises 34"H x 66"W x 30 1/2"D \$350.00

1 Brent extruder with dies, mounted on a small table \$400.00

1 Large diameter custom made extruder, to be wall mounted \$350.00

1 Large container tub with lid containing a variety of hand building tools and an 8" banding wheel \$250.00

1 5-drawer wooden cupboard 65"H x 19"W x 25"D \$250.00 which contains: bagged chemicals - cobalt, copper, aluminum hydroxide, cobalt carbonate, copper carbonate, . iron, 3134 frit. etc. commercial glazes plate hangers, stands etc. 1 sieve

Selection of plaster moulds for bowls and plates, many sizes \$200.00

Contact Linda Miller at 472-3970 or email: errolind@telus.net

SVIPG 10th Anniversary Show Survey

Our potters guild turns 10 next year. There have been several excellent suggestions of ways to celebrate. **This survey only addresses the idea of an exhibition – a show of longer duration than a day or weekend.** Please complete and hand in to the Executive by the June mtg.

Should the guild hold an anniversary exhibition? Yes No

If so, should it be:

- ☐ separate from/ independent of the annual sale or
☐ part of a beefed-up Annual Sale (*ie. sale outside with anniversary exhibition inside?*)

Would you likely take part in (circle) either both Not

Should the exhibition be juried?

By us?	Yes	No
By a gallery owner?	Yes	No
Not at all?	Yes	No

How important is it that it be a “selling exhibition”?

Very Not at all Don't Care

Would you volunteer to help with set up, take down, manning and sales if needed?

Yes No Maybe

Would you prefer to leave the “work” up to the gallery, for a fee?

Yes No Maybe

Would you agree to the guild spending a sum on an exhibition (budget would be discussed and voted on)

Under \$500 Under \$1000 Under \$1500 No cost

To help offset guild expenses would you consider:

entry fee sales commission or both

Should an exhibition be open to:

active members only or invite past members

What is your preferred month for a show? _____

Do you have a suggestion for an alternate exhibition space (lesser known or new gallery, or space not normally used for shows?

Pit-firing, in Rachel's Sawdust Kiln - April 2008. photos by Rachel



AARON NELSON IS RETURNING TO DELTA FOR 2 HANDS-ON WORKSHOPS IN JUNE!

Vancouver potter, Aaron Nelson, is presently living and working at the Archie Bray Foundation for Ceramic Arts in Helena, Montana. He will be coming back to Delta, BC, for 2 one-week workshops in June at the Delta Potters Studio in Tsawwassen.

There are a few spaces open in the sessions from June 9 to 13 and June 16 to 20. Each session is 5 days of instruction and potting for the reasonable fee of \$190.00. Bring your own clay, tools and prepare to be inspired! To book a space for a one week session, please call Molly at 1-604-814-0111, or email me at mmagid@shaw.ca

Please call if you have any questions.

Marilyn (Molly) Magid, Workshop Coordinator, Delta Potters.

Plaster Bats

Quote from ClayArt: "For plaster bats, I use gypsum #1 pottery plaster. I have used my plaster bats and the bat system for 8 years and wouldn't want to use any thing else. Mix the plaster 1 lb. water to 1½ lbs of plaster. Sprinkle the plaster into the water. I use a bat-making system, and it takes 10 lbs. water/plaster mix to make one 14" bat (4 lbs of water to 6 lbs of plaster). You need to make them one at a time."

Does anyone have one of these bat-making forms (to fit onto the wheel-head pins) that you'd be willing to loan out (or rent) for a week. Pls. contact Nancy Wall dnpk@shaw.ca/ 479-3524.

Ceramics Studio

Hello, I am looking for a ceramics studio that accommodate a senior lady to do clay work. She will pay for the use of the studio. We are on the Saanich Penninsula.

Thank you, V. Holman
vinita.anand@gmail.com

Studio Space, North Cowichan

If you know of someone who is looking to rent studio space, I am considering sharing my studio with another ceramic artist.

Margit Nellesmann Ceramics
8350 Richards Trail
North Cowichan, BC V9L 6B4 phone: 250 748 3811
www.margitnellesmann.com
Gallery hours: Thursday-Sunday 12:00 - 5:00 pm

KILN FOR SALE

For Sale: Paragon High Fire Kiln 16 inch inside width 13 inches tall inside, with sitter and timer. Like new collar 7 inches tall for additional height. Brand new boxed a replacement element 2 1/2 shelves (13 inch circle). Several sizes of stilts and holders for raising glazed items off shelf. Cones (small) 03, 04, 05, 06, 016, 017, 018, 022. Large cones 05 and 04. This kiln was used for some ceramics but mainly for low fire china painting. There are some chips in the inside brick but I have the pieces if you want to repair it. I didn't bother and it does not affect its use. I have it sitting on a wheeled board for easy moving. Needs 220 v wiring. I can include our extension big plug for plugging into the dryer outlet. Asking \$700.



Phone Linda 479-8391 e-mail linpowell@hotmail.com

"SOUPER BOWLS for 2008 will be Wednesday, October 22, with set up taking place on Tuesday, October 21. The Conference Centre was booked as fully as the Fairmont Empress and the Empress had just the one date that would work in October."

This is the latest word on Souper Bowls from Helen Hughes.

We also need YOUR decorated and glazed bowls as well. Would you believe, some folks attend the event so they can add to their collections of potters' bowls, so do tape your business card to your pieces or sign your work clearly on the bottom. Finished bowls will be accepted right up until the October Guild meeting so you have lots of time for these!

When you shop.....

**PLEASE MENTION
TO OUR ADVERTISERS
that you saw their ad
in the Guild newsletter.**

South Vancouver Island Potters Guild's newsletter

Guild at a Glance

is ONLINE!

go to

www.mypottery.com

and : www.gobc.ca/SVIPG

Vancouver Island Potters Supply

'Under New Management'

**Friendly Service
Expert Advice
Service and Savings
Quality products
Great Prices**

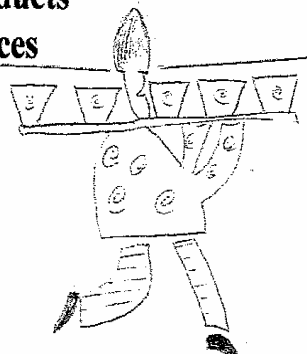
**#2 1009 Herring Gull Way
Parksville, B.C.
V9P 2N1**

Ph: 250.248.2314

Toll free 877.248.2307

Fax: 250.248.2318

Email: supplies@vanpotterywarehouse.com



**Victoria
Clay Art**

933 Ellery St
Victoria BC
V9A 4R9
250 384-3831

Lloyd-El Ceramics has changed its name to
Victoria Clay Art

We still carry all your favourite supplies but also
have many new items that will help you
bring a new dimension to your art.

**Come in to see the new Shippo VL Lite
Potters Wheel only \$770**

You will also find an excellent selection of in store
pottery and sculpting tools.

We also carry fully posable sculpting armatures.

Have a look at our Gare glazes now at 20% off

We also have a number of quality molds for sale.