

# Guild at a Glance

South Vancouver Island Potters' Guild meets the 2nd Monday of the month at 4733 West Saanich Road, Victoria

January 1, 2010

[www.victoriapotters.ca](http://www.victoriapotters.ca)

Volume 11, Issue 5

## MISSA 2010

Registration begins Jan. 25, 2010. Early registration starts Jan. 11th, and is only open to Friends of MISSA.

### Les Manning: Aesthetics of Ceramic Form

#### Part I

This hands-on program is designed for the ceramic artist able in technical skills wishing to examine form from a personal perspective. Students will create the groundwork for advancing their own ideas toward a personal signature with individual content and difference. Students will begin with the evaluation of their work complemented with discussion of existing concepts of ceramic art, design and influences. Each participating artist will pursue their individual goals in a technique of their choice, working through a series of assignments that build on the previous results. Exploring ideas in this step by step process constructs an original foundation of form so that the artist has evident ownership of the concluding results. Priority will be given to students who commit to the two part program.

#### Part II

September 10-18, 2010 Medalta International Artist in Residence Program: The MISSA Mini Residence

This is an opportunity for artists, who have attended workshops with Les Manning, to continue on their personal journey. Artists will share studio space, experiences, thoughts and ideas while working independently with daily access to instruction on various surface treatments. A mentoring portion will be established from June ongoing through the program whereby work can be reviewed and critiqued. Participants will have the opportunity to glaze and fire their ceramic pieces and an evening exhibition of finished art work will be celebrated.

Please contact: Medalta Residency Program - phone: (403) 529-1070 [www.medalta.org](http://www.medalta.org) or Aaron Nelson [aaron@medalta.org](mailto:aaron@medalta.org)

### Cory McCrory: Texture & Colour – Handbuilding with Paper Clay

This class will inspire students interested in working with paper clay. Cory will demonstrate the construction of textured slabs, figurative additions, the use of clay like fabric, and of texture and underglaze on the handbuilt form. Students are encouraged to integrate their own style, push the limits of the clay and bring their own stories to life.

### Gordon Hutchens: Special Effects Glazes

Both crystalline and low temperature reduction glazes will be covered in this intensive hands-on course. First developed in Europe in the late 1800s, crystalline glazes, with their delicate, lacy, spontaneous patterns have gained a growing interest in recent years. This course will explore various crystalline glazes at cone 10 and cone 6, glaze composition, techniques for runny glazes, firing schedules, form, and aesthetics. This course will also explore cone 01 reduction



Cory McCrory

**Don't Forget The Raffle!**

Next Guild Meeting is  
Monday, Feb 8, 2010  
7:30 p.m. at St. Michaels Hall



Ryan McKerley

fired lustre glazes. Fuel economy is one good reason to look at low temperature gas firing, but this process also gives some of the depth and subtlety of high fire reduction with unique colours and lustrous surfaces.

### **John Britt: Explorations in Ceramic Glazes**

This course is designed for potters who want to learn more about glazes and colour development, or who are frustrated with not knowing what makes glazes work or fail, as well as those who want to develop or adjust their own glazes. Participants will work as a group with low, mid-range and high-fire glazes creating line and color blends to explore colour possibilities over a broad range of bases. Students are also welcome to explore glazes in their own independent study. Participants will mix and test glaze recipes on test tiles only. Intermediate to Advanced Students.

### **Lana Wilson: Handbuilding - Lotsa Colour!**

Participants will experiment with Lana's new technique of layers of coloured slips and then carving and inlaying to make handbuilt plates, cups, bowls, etc. Also offered: a new teapot with a stand, a box with a workable drawer, usable swinging door and inset niche plus added layers of stamped imagery. Students will make intricate stamps, layered clay tiles and some handles and feet. Students will laugh, experiment and all teach each other.

### **Ryan McKerley: Throwing - plus a whole lot more!**

Students will begin by throwing basic forms for a variety of surface treatments. Attachments such as lids, handles and spouts will be addressed next. Students will examine and discuss how the parts of a vessel work together to create a coherent form. Throwing and altering will round out the wet clay portion of the class. Water carving with wax/shellac, slip decoration and

carving on leather hard/dry pots will conclude the workshop. Multiple techniques will be demonstrated every day in between periods of focused working.

### **Katrina Chaytor: From Plaster to Pots - Handbuilding with Press Molds**

Explore the exciting possibilities of handbuilding functional pots. Demonstrations and studio work will include a variety of construction techniques and the use of plaster press molds to create pottery forms with decorated surface treatments; from press-molded platters to teapots. Studio work will be punctuated with presentations and information on historical and contemporary handbuilt ceramics.

### **Michael Sherrill: Innovative Extruding**

This workshop will explore innovative extruding techniques to manipulate clay and laminated colored clay. Instead of the extruder being a static tool, just to make an object, Michael sees it as a workstation like a potter's wheel. It is a place to make and manipulate forms. The focus of this workshop is on skill development and unusual handbuilding techniques. Students will explore creative problem solving in the construction and firing of porcelain. With a focus on quality of surface and sense of presence, this workshop is geared to advance the students' functional and/or sculptural work.



Michael Sherrill

### **Bob Kingsmill: Handbuilt Masks**

This workshop is two days of building clay masks as sculptural, architectural and decorative works. Students will hand-build over forms to make objects for the garden, the home and those other places around you that need another reflective face peering (or staring) back. Masks large, small, and tiny, existing alone or as parts of utilitarian pieces will be explored.



### **Elaine Brewer-White: Sculpting Expression**

This 2-Day class will focus on facial expressions and explore the minutia of emotion in the human face. Students will build a series of small, head and shoulders studies to investigate how subtle changes in muscle movement can impact the effect of a piece. Some experience with clay is useful, but beginners are also welcome, as success is possible on many levels. \*Warning – laughter is a byproduct of this class, the instructor cannot be held responsible for bad jokes.

### **Conner Burns: Throwing - Altering Forms & Creating Sets**

This workshop will focus on altering wheel thrown vessels and adding slab components to create the vessel form as desired. The individual vessels will be made with the intention of making a 'grouping' with them. A 'grouping' or 'set' might include a variety of vessels and an appropriate tray – cream and sugar, vase set, tea for one. Participants will enjoy the process of creating, altering and combining vessel parts and entire vessels to create the final artwork. Glazing processes will also be discussed as well as any clay topic desired by the participants.

### **Randy Brodnax: Firing Techniques**

Students will fire the salt kiln and explore diverse firing techniques ranging from low to high fire oxidation, high fire reduction, fuming of chlorides, raku, traditional and non-traditional methods of surface treatments. Expect the unexpected. Stretch your glaze vocabulary as you experiment with a variety of unusual techniques. Learn how to get the most out of your kiln or kilns that interest you.

### **Art Jam**

Based in the natural beauty of the Ome Region, Tokyo Prefecture, Japan, the Ome Art Jam is a movement determined to pay respect to nature and to share the traditions of Japanese art with the wider world. Beginning with his exhibition at the Art Gallery of Greater Victoria in 2004, painter Sugimoto Hiroshi has been dedicated to creating an international cultural exchange among artists.

In 2006 five Japanese attended the Moss Street Paint-In in Victoria and a residency at University of British Columbia in Vancouver. In 2008 four Canadians spent three weeks at Art Jam 2008 in Ome. In 2009, Ome Art Jam invited one Canadian, one Laotian and four Thai artists. And this year three Japanese artists will come to offer courses at MISSA for one week as part of Art Jam 2010, a festival of art shows, performances and workshops throughout southern Vancouver Island. In addition to courses offered by the artists, two Noh theatre performers will be with us for the week, to offer background, performance and a taste of participation in this profound art form. Also, two samisen players will be with the group to perform NAGAUTA, Japanese ballads, accompanied by samisen. Another essential part of the Japanese contingent is Fukuda Nobuyoshi, whose understanding of the art forms and skill at interpretation will be invaluable. This cultural exchange program was made possible by the coordinating effort of Robert Amos in Canada and Nobuyoshi Fukuda in Japan. MISSA is truly fortunate to be host to this integrated cultural exchange.



Conner Burns

### **Art Jam - Handbuilding Suzuki Toshi-ichi July 14-16, 2010 \$245**

Suzuki Toshi-ichi received his Master's Degree in pottery from the Graduate School of the Tokyo National University of Fine Arts and Music in 1990. In addition to a prestigious exhibiting career in Japan, his pottery is included in the permanent collection of the Yixing Ceramics Museum in China. Presently he is an instructor at Meisei University, Joshibi University of Art and Design and Yokohama College of Art and Design. Though youthful and ebullient himself, Suzuki's ceramics are typically created in a deceptively modest KOHIKI style. Simple forms and neutral monochrome glazes are subtly crafted to enhance the look of food. Their WABI-SABI presence is constantly at play in the pleasure of using this elegant ware.

At MISSA, Suzuki's students will be involved with him in handbuilding wares, experiencing by careful attention this thoroughly Japanese sensibility. His simple grey, brown and white glazes embody the meaning of that elusive word, SHIBUI. Mr. Suzuki will be joined during some part of this course by Ota Harumi, a brilliant creative potter now living in Victoria. Ota brings a lifetime of experience in the Kutani tradition in Ishikawa Prefecture, Japan.

## Subject: Workshop on Saltspring—Sequoia Miller

Here is some info regarding our guild's upcoming workshop - Feb. 21 & 22; \$80.00 -- We have about 15 places open. [www.saltspringpottersguild.com/events](http://www.saltspringpottersguild.com/events)

This workshop should be of interest to all potters at any level. One can always discover new tips and techniques for throwing and handbuilding. Come join us for a fun weekend. A cheque made payable to, Salt Spring Potters Guild, will hold a place. See my mailing address on the poster below.

Thanks, Beth Feller

"For the workshop, I plan to focus on wheel-thrown and altered forms. I'll start off by throwing several cups, bowls, plates, jars and pouring forms. Then as the clay dries I'll alter and assemble the pots. I'll cover techniques such as wet faceting, throwing bottomless forms, and getting altered lids to fit. I'll also show a few ways of scraping and shaving the surface of the pots to achieve a crisp and subtle angularity. I'll discuss my approaches to glazing and glaze a couple of pots to demonstrate my core techniques." .....Sequoia Miller

Cancellation Policy: Money will be fully refunded up to five weeks before the workshop, January 16, 2010. After that, if a registered participant wants to cancel, they will need to find a replacement, as no refund will be issued.

If any of you are planning to attend this workshop, please let me know and perhaps some carpooling, etc. can be worked out.

Betty



## YOUR 2009-2010 EXECUTIVE

<b>President</b>	Roger C.	250-388-9642
<b>Vice-Pres</b>	Ann S.	250-478-2341
<b>Secretary</b>	Belle L.	250-721-2976
<b>Treasurer</b>	Linda V	250-479-5966
<b>Archivist</b>	Fern W.	250-744-1096
<b>Library</b>	Elaine W.	250-382-0317
	Cherlynn L.	250-727-8388
	Helen P.	250-383-5808
	Priska S.	250-385-2303
<b>Membership</b>	Betty B.	250-382-0974
<b>Newsletter Committee</b>	Betty B.	250-382-0974
	Tony M.	250-474-1532
	Jocelyn S.	250-920-0196
<b>Webmaster</b>	Deb C.	dlclay@shaw.ca
<b>Program Coordinators:</b>	Penny J.	1 250-715-1403
	Louise P.	250-655-3811
	Helen P.	250-383-5808
<b>Raffle</b>	Ester G.	250-658-4523
	Tobias T.	250-383-3893
<b>Coffee</b>	Kris J.	250-384-5344
	Maria G	
<b>Directors:</b>	Meira Mathison, Betty Burroughs, Betty Fulton, Nancy Wall	



Dear Interested Persons,

Happy New Year to you all, I hope that you are well and happy. Crete is a new destination and there are only 7 spaces left at this time. The limit for this group is 12 persons. I encourage you to contact me soon if you wish to register or if you have any questions or if you would like me to call you to discuss details. Please visit the complete Crete page on my website at [www.denysjames.com](http://www.denysjames.com)

My very best wishes to you for the new year,  
Denys James

#### CRETE EXCURSION SEPTEMBER 27- OCTOBER 12, 2010

Join us in the exploration of this extraordinary Greek island. This excursion is suitable for any person who is interested in experiencing this culture through an arts and crafts focus. Experience Crete's stunning natural beauty and its rich culture. Learn about the ancient Minoan culture through visits to its special sites and museums. Hands-on experience of pottery making and firing in a special studio in the traditional mountain pottery village of Margarites. Alternate activities can be arranged for those not wanting to participate in a hands-on studio experience. Walk in the uplands through the fragrant herb fields to the ancient city of Eleftherna. Visit the ancient Minoan ruins of Knossos.



#### MARGARITES

Margarites is a small mountain village located 30 km southeast from Rethymnon in the centre of the island of Crete. Many of the families living in this village are involved in the making, firing, and distribution of pottery. The pots here are made using techniques dating back thousands of years. There is a Museum of Ceramics in the village square, which displays local ceramic artefacts. Traditional and modern techniques coexist in perfect harmony in the 16 pottery workshops.

We will spend several days in this area, observing and working with the local potters. Join the hands-on experience with the local clay and work with Greek ceramist Giorgos Dalamvelas in Margarites. We will be welcomed royally by this talented and gracious local artist. His studio is a wonderful heritage building with working spaces, terraces, and relaxation areas. Enjoy the local artists and friends who stop by for coffee and conversation. Giorgos has learned the local earthenware tradition and now chooses to interpret the landscape, history and life of this region in his work. We will follow him along with his process of creation and develop our own pieces. This studio experience is a truly unique opportunity for participants. Denys James will be working also and demonstrate his unique methods and share his inspiration with the group. In addition to being able to experience the pottery process in an ancient culture, visitations to other potters provide us with a rare opportunity to interact with the people and their daily lives in a way that is impossible for the average tourist. We will have an interpreter with us and participants are encouraged to communicate directly with the potters and their families.

Margarites will be our base for day trips to other regions of Crete as well as for short walks and journeys to local historical, scenic and archaeological sites.

Learn about Cretan history, culture, and customs from local guides and interpreters.

The cost of this trip is \$3375 USD. Package details are on the website. Please send a \$150 deposit, and I will reserve a space for you. **EARLY REGISTRATION DISCOUNT \$100** for registrations received before **APRIL 1**

**UPCOMING EXCURSIONS: MOROCCO** October 27-  
November 17, 2010, **BURMA** January- February 2011

All the best, Denys James, Discovery Art Travel  
Email: [denys@denysjames.com](mailto:denys@denysjames.com) Phone: 1 250 537 4906



## KILN AND EXTENSION CORD FOR SALE

**KILN, cone 6-8, Electric, 23" x 23" inside, Asking \$200**

**Kiln works, but efficiency could be improved if some original elements were replaced. Great potential for converting to RAKU kiln. Kiln has spring loaded lid.**

Also **EXTENSION CORD asking \$100.** 74 ft., heavy duty, 45 amp for kiln.



Phone 250-479-9833

E-Mail [joyandcamfinlay@shaw.ca](mailto:joyandcamfinlay@shaw.ca)



## Subject: West Coast Wholesale Show

Hello and Happy New Year!

Attached to this email is an information letter about the 2010 IAA West Coast Wholesale Show, along with an application for the show as both a Word document and a pdf.

With the show only a month away, we need to get the applications in as soon as possible, so it's best if you move on this quickly. We've set a deadline of January 22 . . . if you can get it in earlier, that's even better. Please don't count on getting it in late. It is possible that we will be able to fit you in, but with the floorplan having to be submitted to the hall and to the fire department two weeks ahead of time, we may not be able to either.

If you have any questions, please contact Mary at this email or by phone at 250 381-0683.

And if you know anyone else who may be interested as an exhibitor or a buyer, please pass the information along. We've also attached an invitation for retailers to attend the show which you can either print out or attach to an email. (It is attached as both a jpg and a pdf). If you want or need printed invitations, just let us know and we will send them to you. Word of mouth is the best advertising we can get for this show and the bigger it gets the better it is for the artists and the retailers.

If you got this email more than once, our apologies. We have sent it to all those who expressed an interest in the show as well as to all IAA members. If you happen to be on both lists, this may have come to you twice.

Cheers,  
Mary & Danny



### A joke to begin the New Year

"Oh, I am glad to see you," the little boy said to his grandmother (on his Mother's side). "Now Daddy can do the trick he's been promising us." The grandmother was curious, "What trick is that?" she asked. "He told Mummy that he'd climb the walls if you came to visit," answered the little boy.

### **SOUPER BOWLS OF HOPE**

The Souper Bowls of Hope will be held in October but it is not too early to be gathering pots and other creations by talented people. The funds raised by the event are used to help youth in our Region through the Youth Empowerment Society and the many programs it offers to give young people a positive alternative to a negative lifestyle. There is storage space so when you clean out or rearrange your studio, please contact Helen Hughes at 250 – 361 – 1291 or email hh456@shaw.ca for pickup. THANKS!! The young people will appreciate your assistance!

Helen

### **Pottery Classes for Adults**

If you can imagine it, you can make it- after learning some basic technique. Very small classes. 8 week sessions, 3 hours each week, 3 wheels. Lots of individual attention, lots of colours for pots. \$300 per session, includes all materials and firing. Call to inquire. Class for parent with home-schooled child can be arranged as well.

Joan Kagan Pottery,

Pots for food and flowers, function and fun, in many colours

1009 Richmond Ave. (near Oak bay Ave)

250-388-4110

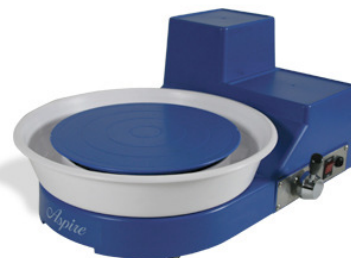
[www.joankaganpottery.com](http://www.joankaganpottery.com)

**Pottery kiln for sale**, state of the art, L & L Kiln, e 23t, fully programmable, energy efficient, hard ceramic element holders which makes changing elements a breeze. 2 ½ years old, new elements and kiln furniture. \$1900. 250-629-6722 or email: [mgabriel@shaw.ca](mailto:mgabriel@shaw.ca)

Hi fellow potters,

Muriel is looking to buy a table top wheel, probably the Shimpo Aspire. Does anyone here have such a wheel or have experience with it? Please let me know by e-mail at [priska@shaw.ca](mailto:priska@shaw.ca) or better still call Muriel directly at 250 652 5434.

Thank you, Priska



### **IAA Photoshoots at Blanchard Community Centre, 901 Kings Rd., Victoria, B.C.**

1st photoshoot: Saturday, January 30th, 2010, from 10:30am to 5pm

2nd photoshoot: Saturday, February 6th, 2010, from 10:30am to 5pm

Participation is on a first come first served basis with preference given to IAA members, and, unless space is still available, each person is restricted to only one photoshoot session. There are 14 spots per photoshoot, with a combined total of 28 over both the January 30th and the February 6th photoshoot. The cost per session is \$30.00 per person for IAA members and \$75.00 for non-members. The application deadline for either photoshoot is January 20th, 2010. Participants withdrawing from the photoshoot on or before January 23rd will receive a complete refund. Withdrawals after January 23rd will receive no refund.

A few days before the photoshoot, each participant will be contacted with the time of day his/her work is to be photographed. Each participant is allotted only 20 minutes to have their work photographed. The work will be photographed with a digital camera by professional photographer Bob Matheson, the same photographer we have relied on since the first photoshoot. Please bring any props deemed necessary to photograph the work properly. After the photos are taken, each participant is allotted only 20 minutes with the IT person, Steve Switzer, who, with the guidance of the participant, will tweak about 10 of the photographs and burn them to CD. The CD will contain all 10 selected and tweaked images in low resolution for e-mailing and/or thumbnails, and also in high resolution for brochures or rack cards, etc.. The CD is supplied by the IAA.

To participate in either of the photoshoots, please print the application form below, fill it out, sign the waiver and, together with a \$30.00 cheque made out to Island Artisans Association (please write it out, as no abbreviations or any other monikers are accepted by the bank) mail it, post marked no later than January 20th, to:

IAA Photoshoot , c/o Jo Ludwig  
P.O.Box 9 Crofton, B.C. V0R 1R0

Should you require more than one photo session, fill in another application, include a separate cheque and add it to your first application. For more information, please contact Jo at 250-246-3991 or at [wy203@victoria.tc.ca](mailto:wy203@victoria.tc.ca).



### G-200 Change

Division of Chem-Clay Corporation  
E-mail: [info@standardceramic.com](mailto:info@standardceramic.com)  
Website: [www.standardceramic.com](http://www.standardceramic.com)

We have been informed by Imerys Ceramics, the company that acquired The Feldspar Corporation, that the composition of G-200 will change on January 1, 2009. In a nutshell, they are no longer blending the potash spar with soda spar, so the potassium content will be higher in the new product. Please read the attached letter from Imerys. Also attached are the chemical analyses of the old G-200 and the new G-200HP. Basically, by blending 30% soda spar with the new G-200HP, you will have G-200.

If you have any questions, please do not hesitate to call our Technical Department at 412-276-6333 or email to [technical@standardceramic.com](mailto:technical@standardceramic.com)

**When you shop.....**

**PLEASE MENTION  
TO OUR ADVERTISERS  
that you saw their ad  
in the Guild newsletter.**

### **ADVERTISING RATES**

**Business card size (2" x 3 1/2"): \$10. per issue,  
\$75. for 10 issues.**

**1/4 page ad: \$20. per issue, \$150. for 10 issues.**

**Sale announcements, events, classified ads: Free.**

South Vancouver Island Potters Guild's newsletter

### **Guild at a Glance**

is ONLINE!

go to

[www.victoriapotters.ca](http://www.victoriapotters.ca)

and : [www.gobc.ca/SVIPG](http://www.gobc.ca/SVIPG)

## **Vancouver Island Potters Supply**

**'Under New Management'**

**Friendly Service  
Expert Advice  
Service and Savings  
Quality products  
Great Prices**

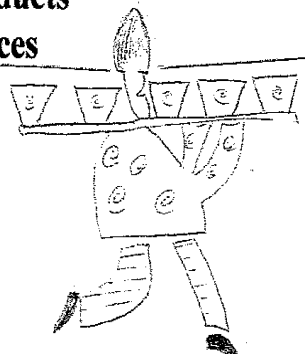
**#2 1009 Herring Gull Way  
Parksville, B.C.  
V9P 2N1**

**Ph: 250.248.2314**

**Toll free 877.248.2307**

**Fax: 250.248.2318**

**Email: [supplies@vanpotterywarehouse.com](mailto:supplies@vanpotterywarehouse.com)**



## **Victoria Clay Art**

654 Burnside Road W.  
Victoria BC V8Z 1M8  
250 384-3831

As of June 1st, 2009

**VICTORIA CLAY ART**

Will be in its new location at:

**654 Burnside Road West**

Please visit our new store where we  
Will continue to offer:

- A wide variety of Clay
- Glazes
- Pottery and sculpting tools
- Kiln and wheel sales/service
- Kiln firing
- Chemicals, and
- Other art supplies.