

Guild *at a* Glance

South Vancouver Island Potters' Guild meets the 2nd Monday of the month at 4733 West Saanich Road, Victoria

October 1, 2009

www.victoriapotters.ca

Volume 11, Issue 2



Past President's *MUSINGS* ...

As I bask in luxurious freedom - *having handed control to Roger C.* - I want to **THANK the executive and committee leaders who served with me over the past 3 years.** Each contributed their unique talents, and committed their time and energy - thus influencing how the guild was able to meet the needs and desires of our members.

I've enjoyed brainstorming and planning together, as well as participating in events [*especially workshops by Cindy G., Martha James, and Darrel Hancock; and our bus-trip to Clay Symposium '07*], but most treasure the friendships that have developed from working together.

I challenge all members to share your expectations with the guild's Executive volunteers – it's the only way they can know what priorities to pursue. Of course 8-10 people cannot be expected to 'do it all' so don't be afraid to lend a hand! I am certain that our 10th year will prove to be the most memorable yet!

Nancy Wall

Don't Forget The Raffle!

Next Guild Meeting is
Monday, Nov 9, 2009
7:30 p.m. at St. Michaels Hall



THANK YOU !! ...*from Rachel C.*

I sure enjoyed receiving the Get Well card in September from the guild - with comments from everyone - and the flowers were so cheerful and lovely !
I will keep in touch. Thanks for all your loving thoughts and wishes.



Souper Bowls of Hope

Thursday, October 22 , 11 AM to 1:30 PM at the Fairmont Empress. If you have pots or other contributions, please phone and I will pick up. Phone is 250 – 361 – 1291 or email hh456@shaw.ca

We can all help the youth who are having a difficult time. Thanks to all who have helped in any way!!

A quote from a young person who had been in a program –

“ I can communicate better with my mom now...”

“I learn’t to do things in different ways so I don’t get in trouble”

From a parent, “Thank goodness we have this kind of program for our own children. All the staff were awesome”

All the programs at the Youth Empowerment Society are free of charge and Souper Bowls allows it to keep happening.

Helen Hughes



LIBRARY CORNER

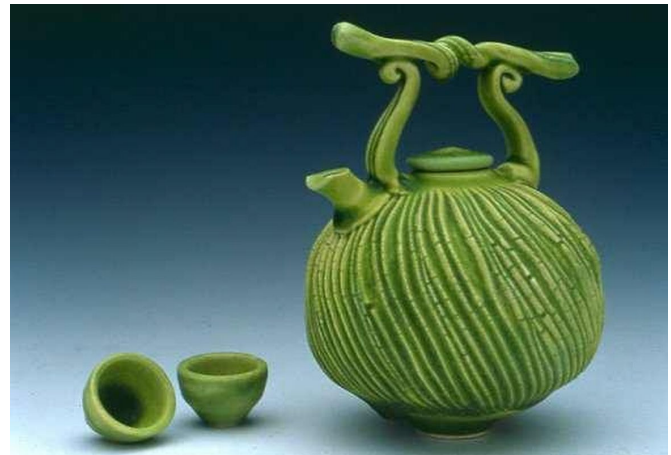
The library is off to a good start for the new season thanks to all the hard work of Helen Pednault. Helen came in over the summer with Joy Finlay to search for lost books and DVDs – and she was very successful. She also organized all the library materials to make it easier for everyone to find and check things out.

The Library Committee and the Executive have made a slight change to the borrowing rule. You may now renew a checked-out item for no more than one meeting after which it must be returned or a fine of \$5 per item per meeting will begin to accrue. Remember that all money collected for fines goes towards the purchase of new books and DVDs for our library.

Elaine White

Fong Choo Workshop

October 24-25, 2009 9-4 pm \$155 plus GST
Recognized for his signature miniature teapots, Fong Choo will explore the teapot form with reference to the perspective of proportions: from large to small, from whimsical to utilitarian. There will be discus-



sions on his jewel tone electric glaze effects plus tool making and cane handle demonstrations. Fong will discuss the issues of networking, pricing and presentational aspects of his work.

Fong Choo is an adjunct faculty member with the Bel-larmine University in Louisville, Kentucky. He is renowned internationally for his miniature teapots reminiscent of the Yixing (yee shing) style of pottery that dates to the 14th Century. However, he makes the teapots very much his own with jewel-like glazes and exquisite, sensual shapes. Fong notes, “there is so much presence in the mini-teapot size. I use my skills to scale these pieces down; some are no bigger than a hen’s egg.”

Contact: Metchosin International Summer School of the Arts

650 Pearson College Dr. Victoria, BC V9H 4C7
250 391-2420 www.missa.ca

YOUR 2009-2010 EXECUTIVE

| | | |
|------------------------------|----------------------------------|----------------|
| President | Roger C. | 250-388-9642 |
| Vice-Pres | Ann S. | 250-478-2341 |
| Secretary | Belle L. | 250-721-2976 |
| Treasurer | Linda V | 250-479-5966 |
| Archivist | Fern W. | 250-744-1096 |
| Library | Elaine W. | 250-382-0317 |
| | Cherlynnne L. | 250-727-8388 |
| | Helen P. | 250-383-5808 |
| | Priska S. | 250-385-2303 |
| Membership | Betty B. | 250-382-0974 |
| Newsletter Committee | Betty B. | 250-382-0974 |
| | Tony M. | 250-474-1532 |
| | Jocelyn S. | 250-920-0196 |
| | Deb C. | dlclay@shaw.ca |
| Webmaster | Deb C. | dlclay@shaw.ca |
| Program Coordinators: | Penny J. | 1 250-715-1403 |
| | Louise P. | 250-655-3811 |
| | Helen P. | 250-383-5808 |
| | Ester G. | 250-658-4523 |
| Raffle | Tobias T. | 250-383-3893 |
| | Kris J. | 250-384-5344 |
| Coffee | Kris J. | 250-384-5344 |
| | Maria G | |
| Directors: | Meira Mathison, Betty Burroughs, | |
| | Betty Fulton, Nancy Wall | |
| | | |

SVIPG 10th Anniversary Celebration Exhibition

Autumn and Christmas markets will soon be in full swing, then the Christmas holidays, the 2010 winter Olympics, Easter and spring gardens to tend. The SVIP Guild gallery exhibition to be held in May 2010 still seems to be a long way off but it will be here before you know it. We encourage everyone to participate in this 10th anniversary celebration of our guild so please consider keeping a special piece of your work for this event. Or, use the exhibition as a reason to stretch your wings and create something out of the ordinary!

The Martin Batchelor gallery is an elegant simple gallery space, not large but with high ceilings and unobstructed views. We will have total use of the space, which means that in addition to having work on plinths, we may also make use of the walls as well as a possibility of hanging pieces from the ceiling. Please contact me if you think you would like to hang a piece from the ceiling as I will have to confirm parameters with the gallery (weight etc).

The call for entry will go out in early spring 2010, with pieces needing to be ready approximately one month ahead of the show date. The show will be juried, so please only consider putting in your absolute best work. In the meantime we welcome ideas for an exhibition title/theme. I am also still looking for someone, or a team, to work on getting a couple of sponsors to help offset costs. Please feel free to contact me with ideas, and if you'd like to help.



As the show dates get closer, I will put out a call for a number of volunteers to help with things like set-up, take-down and documentation of the show, designing invitations and their distribution, coordinating refreshments for the opening. We will also certainly need able bodies with vehicles to transport borrowed plinths to the gallery on set-up day and return at the end of the show.

Show dates are: May 8 – June 3, 2010, with set-up Friday, May 7 and take-down June 3rd. An opening celebration is planned for Saturday May 8. Mark your calendars and get started on your pottery piece!

The Martin Batchelor Gallery is located at 712 Cormorant St in Victoria, and is open Monday to Saturday.

Cindy Gibson cgpottery@shaw.ca

Polar Bear by Muriel Sibley, vases by Jane Van Alderwegen

2009 Studio Sale MARY FOX POTTERY

321-3rd Ave, Ladysmith, B.C.
Saturday, November 7 11 am - 5 pm
Sunday, November 8 11 am - 5 pm.

Hello Pottery Aficionados,
Over the past year and a half, Mary has been rebuilding her house and studio, the job is almost complete, and this year's work will be displayed in her new gallery. No more standing in the rain looking at pots! As usual there will be new work to look at and lots of "finds" dotted around the studio.

To add to the fun, Rocky Creek Winery will be there offering a tasting of their award winning wines.

The Pottery Studio is easy to find. Turn off the highway into Ladysmith at Roberts Street, go up the hill to 3rd Avenue and turn left. She is the second house on the left.

Usual studio hours: Tuesday to Saturday, 1 pm to 5 pm or by appointment.



Volunteer Pottery instructor needed

Chris Joy is the manager of Laurel House, previously a VIHA run mental health drop-in centre, now managed by Beacon Community Services. You may recall that Laurel House nearly closed a few years ago, but a largely member-driven campaign to keep Laurel House open, was successful. However, staff has been significantly reduced from 4-5 to 1-2.

In previous years, Laurel House ran a popular arts program with pottery being a weekly activity. Laurel House has a kiln and a small wheel on site, and various kinds of clay, lots of glazes....everything in boxes.

Chris Joy contacted the guild wondering if there is a volunteer or volunteers from our group who might be interested in reviving a small pottery class for Laurel House members. Although there is no remuneration for the volunteer, Beacon Community Services is willing to give tax receipts valued for your time.

If any Guild members are interested or would like to visit Laurel House, please email Cindy at cgpottery@shaw.ca or Chris at chrisjoy67@hotmail.com or drop by 1452 Elford Street, off Pandora, across from the Stadacona Park. The phone number is 595-1572 and Chris is there Mon-Fri 9am-3pm.

Laurel House is aiming to host an Open House in early December and would love to have some bowls or candle holders made by members available for sale.

PACIFIC RIM POTTERS

Annual Fall Show & Sale
Saturday, NOV. 7th, 10am to 4pm
at
Knox Presbyterian Church Hall
2964 Richmond Road
Victoria, BC

FREE ADMISSION, Refreshments, Door Prizes
Wheelchair accessible.

Featuring: Betty Burroughs, Roger Champagne,
Peggy Elmes, Ester Galac, Cindy Gibson, Darrel
Hancock, Harriet Hiemstra, Nora Lewin, John
Robertson, Heidi Roemer, Faro Sullivan, Jane Van
Alderwegen, and Linda Vigliotti.

When you shop.....

PLEASE MENTION
TO OUR ADVERTISERS
that you saw their ad
in the Guild newsletter.

ADVERTISING RATES

Business card size (2" x 3 1/2"): \$10. per issue,
\$75. for 10 issues.

1/4 page ad: \$20. per issue, \$150. for 10 issues.

Sale announcements, events, classified ads: Free.

South Vancouver Island Potters Guild's newsletter

Guild at a Glance

is ONLINE!

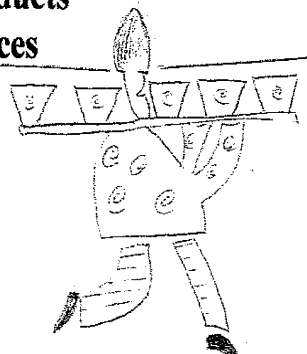
go to

www.victoriapotters.ca

and : www.gobc.ca/SVIPG

Vancouver Island **Potters Supply** **'Under New Management'**

Friendly Service
Expert Advice
Service and Savings
Quality products
Great Prices



#2 1009 Herring Gull Way
Parksville, B.C.
V9P 2N1

Ph: 250.248.2314

Toll free 877.248.2307

Fax: 250.248.2318

Email: supplies@vanpotterywarehouse.com



Victoria **Clay Art**

654 Burnside Road W.
Victoria BC V8Z 1M8
250 384-3831

As of June 1st, 2009

VICTORIA CLAY ART

Will be in its new location at:

654 Burnside Road West

Please visit our new store where we
Will continue to offer:

- A wide variety of Clay
- Glazes
- Pottery and sculpting tools
- Kiln and wheel sales/service
- Kiln firing
- Chemicals, and
- Other art supplies.