

# Guild *at a* Glance

South Vancouver Island Potters' Guild meets the 2nd Monday of the month at 4733 West Saanich Road, Victoria

April 10, 2012

[www.victoriapotters.ca](http://www.victoriapotters.ca)

Volume 13, Issue 8

## March's Meeting – Gord Reisig – Glaze Techniques

At our March meeting we had the pleasure of listening to Gord Reisig. He shared anecdotes about his life as a potter and his exploration with different glaze techniques. Gord has been in Victoria since 2001.

Gord started his career as a potter in the Kootenays (1967-1971). He was fortunate to have Walter Dexter as mentor and friend. They worked with stoneware clays and reduction firings. Later Gord moved to a small farm outside Chilliwack. The barn became a studio where a community of potters gathered. He built a gas kiln from bricks from an old mill - hauled to the farm by canoe.

He has taught in many places including Emily Carr, Abbotsford and at Xchanges in Victoria. He encouraged his students to experiment and to find their own style.

He has traveled to California, Mexico and Australia for workshops and inspiration.

Gord brought many beautiful pieces illustrating a variety of surface decoration techniques. Currently he is making larger pieces which he alters and then applies multiple layers of glaze.

He recommends starting with a matte glaze as a base and using a sprayer to apply 2 or 3 layers. For smaller items, he usually dips the pot in the matte glaze for the first layer then sprays on final layers.

He works with up to 8 glazes.



... continued on next page

The next Guild Meeting is

**Monday**

**May 14<sup>th</sup>**

7:30 St. Michael's  
Anglican Church

4733 West Saanich Road

*Don't forget  
the Raffle !*



He demonstrated altering and adding texture with slip. With this method he "feels like an artist - creating and excited". He fires to cone 5, holding for 30 minutes or more and then slowly cooling and soaking at different stages (true to character, Gord encourages experimentation).

For Gord clay is a stress manager.  
*If we all could manage our stress so beautifully!*

text and photos submitted by Nancy Alexander

## In Next Month's 'Guild at a Glance' (maybe) EXPERIENCES OF NCECA

Some of you were lucky enough to attend the recent NCECA in Seattle (the Editor is quite jealous). It is understood that its timing left little possibility of submitting your experiences for this month's newsletter ... but ...

**YOU COULD SEND PHOTOS AND ANNOTATIONS OR OTHER TEXT FOR NEXT MONTH!**

Please EMAIL photos, captions, blog or web addresses, stories – on whatever was a 'take away moment' for you so they can be included in May's 'Guild at a Glance' by MONDAY, APRIL 30<sup>TH</sup> and share your experiences of NCECA with those of us not able to attend!

email : [eartharts@shaw.ca](mailto:eartharts@shaw.ca)

Outside the Studio

**Will return NEXT MONTH!**

Thoughts? Questions? - If you have any questions you would like answered here please email them to [design@earthwordcreative.com](mailto:design@earthwordcreative.com) - **Deb Clay**

Your 2011-2012 Executive			Webmaster	Deb C.	<a href="mailto:dlclay@shaw.ca">dlclay@shaw.ca</a>
President	Penny J.	1+250-715-1403	Program Coordinators:		
Vice-Pres	Nancy W.	250-479-3524		Helen P.	250-383-5808
Secretary	Farida M.	1+250-733-2161		Rosemary N.	250-477-7032
Treasurer	Linda V.	250-479-5966		Muriel S.	250-652-5494
Archivist	Fern W.	250-744-1096	Raffle	Ester G.	250-658-4523
Library	Helen P.	250-383-5808		Tobias T.	250-383-3893
Membership	Betty B.	250-382-0974	Coffee	Priska S.	250-642-7422
Newsletter	Louise P.	250-655-3811		Nancy W.	250-479-3524

## At May's Meeting – Surface Decoration

Mark your calendars for May 14, when SVIPG members **Faro Sullivan** and **Paige Coull** will entertain and inform with a demonstration of surface treatments, including slips and underglazes, mishma, sgraffito, stencils, patterns and stamping.



PHOTOS – above, Faro Sullivan  
– left, Paige Coull

### Guild at a Glance

... is the newsletter for the South Vancouver Island Potters Guild.

It is published monthly, September through June, and is available on line at: [www.victoriapotters.ca](http://www.victoriapotters.ca)

Articles and items of interest to members are welcome and will be included as space permits.

Items for inclusion are best emailed to the editor, Louise P, at: [eartharts@shaw.ca](mailto:eartharts@shaw.ca)

#### SUBMISSION DEADLINE

The earlier submissions are received, the more likely there will be room to include them. Our meetings are held the second Monday of each month. Be kind to the editor, please send items for inclusion before the

#### FIRST MONDAY OF EACH MONTH

#### Newsletter Staff

program writer: Nancy A. 250-479-8559

editor: Louise P. 250-655-3811

### Poem of the Month – Glaze, The Amazing Glass

When silica melts  
it makes a glass.  
"So what makes a glaze?"  
you might ask.

Silica melts near  
3000 degrees,  
firing a kiln that hot  
won't be a breeze.

So add a little flux  
and you will see  
that silica melts sooner  
and happy you'll be!

But molten silica  
when it is hot  
runs down the sides  
and off of your pot!

So if you want  
that silica to stick,  
alumina is the one  
that you should pick.

Alumina bonds  
silica to clay -  
"Very important!"  
most potters will say.

Silica plus alumina,  
add in some flux,  
getting the right ratio  
is really the crux.

Silica makes glass,  
alumina helps bond,  
flux is a melter,  
of these we are fond.

These three things  
will make a good glaze,  
get the right ratio  
and you'll be amazed!

**Chic Lotz**  
[www.PotteryPoet.com](http://www.PotteryPoet.com)



## Upcoming Events

THE 13TH ANNUAL



# LOOK

FINE ARTS EXHIBITION

April 21 - May 12, 2012

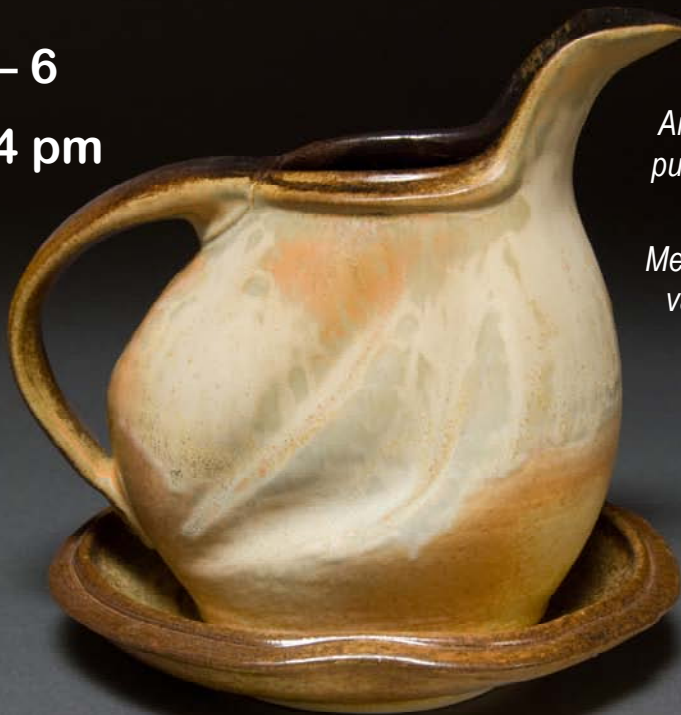
Call for Artisans and  
Volunteers  
Deadline – April 15<sup>th</sup>, 2012

For submission guidelines  
& information visit:  
[www.cacg.ca](http://www.cacg.ca)

## GORDON HEAD STUDIO TOUR

May 5 – 6

11 am – 4 pm



*Area artists welcome the public to their homes and studios.*

*Members will showcase a variety of work including original paintings and prints, stone and wood sculpture, fibre art and pottery.*

Maps available at local Recreation Centres or [www.gobc](http://www.gobc)  
Contact 250-658-4523 for more information

**Let us know about your upcoming event.**

**Email the Editor, ([eartharts@shaw.ca](mailto:eartharts@shaw.ca)), anytime prior to the first Monday of a month so your event can be included in that month's newsletter.**

# ORTON CONE BOX SHOW

2012 International Juried Show & Exhibition

**DEADLINE FOR ENTRY  
JUNE 18, 2012**

- maximum 2 entries per person
- work must be 50% clay
- entry fee is \$35 US
- each piece must fit in a Large Orton Cone Box (3" x 3" x 6")
- all pieces must be for sale & no more than \$200 per piece

For more information & entry form:  
<http://www.coneboxshow.com/entry/>



**Northern BC Clayfest**  
**August 9-11, 2012**

Linda Doherty



Rob Froese



Fredi Rahn



Simor Leach

Prince George, BC early bird price \$175

Information: <http://pgpotters.ca/index.php/clayfest-2012>

Registration: <http://pgpotters.ca/index.php/register>

spring + summer classes

We are pleased to introduce our spring and summer line up of classes + workshops

For a complete list of classes, course descriptions + registration please visit our website at...

[www.blackbirdstudios.me](http://www.blackbirdstudios.me)



**CALL to participate in the Clothesline Art Show at Coast Collective**  
**August 19<sup>th</sup> 11am – 4pm**





Groups are invited to show & sell their work for a group fee of \$30 plus 20% of sales.

Susan Whitman is willing to organize a Guild group.

For more information call her at 250-748-9670 or email [susan@mirasolstudio.com](mailto:susan@mirasolstudio.com)

## Upcoming Events



 Saanich Peninsula Arts & Crafts Society

59TH ANNUAL  
FINE **ART**  
EXHIBITION  
& SALE


**Saturday**  
**APRIL 28**  
**10 - 6**

**Sunday**  
**APRIL 29**  
**10 - 4:30**

*Guest Artist*  
*Norman Yates*

*Copper Sculpture,*  
*Heather Hamilton*

**MARY WINSPEAR CENTRE**  
**2243 BEACON AVENUE**  
**SIDNEY • BC**

 Admission \$4 • accompanied children free



## ADVERTIZING RATES

Business card size (2" X 3 1/2") :  
\$10 per issue  
or  
\$75 for 10 issues

Quarter page ad (3 1/2" x 4 3/4") :  
\$20 per issue  
or  
\$150 for 10 issues

**Sale announcements, events,  
classified ads:**

**FREE**

contact editor at:  
eartharts@me.com



## Victoria Clay Art

654 Burnside Road W.  
Victoria BC V8Z 1M8  
250 384-3831  
vcart@shaw.ca

We're now stocking heavy duty canvas from Pakistan. Great for making wareboards or wedging tables. \$8.95 per yard.

Custom wareboards are available as well, call for details.

Dirty Girl pottery tools available including foot fetish, wiggle wire and oak angle wood tools. These make great stocking stuffers.

We have tea pot handles from England, finest quality cane sized from 3" to 8". Great selection, priced from \$5.75 to \$12.95 each.

Great new items in stock for texture on clay such as: Amaco rollers, Mayco designer stamps, wooden rollers, star cutters, ribs, haxe tool, paddles, alphabet and number stamps, rasps, slip trailers, etc.



Sisters Jen and Jess are experienced, trained Professional Organizers. Overwhelmed? They help decide with you what is clutter in your home, office or studio. Their specialty is helping people manage big changes in their lives. If you are downsizing or moving your place of residence, reorganizing your life after an accident, going through a divorce, revitalizing your business premises, or rearranging your studio, garage or hobby space – then contact the Chaos to Calm Professional Organizing Team.


Jen and Jess will work with you to decide what possessions to keep, donate, sell or recycle. They can help you sell items on-line. They will set up and host garage sales, review your recycling system, and recommend new strategies to keep you organized with your paperwork, bills and records.

You might be thinking "I can do this by myself". But experience shows that most people either don't get started or carry through.

Jen and Jess have a wealth of ideas and resources to help you get and stay organized in all aspects of your life. Experience shows this can reduce feelings of stress and anxiety and sometimes improve your relationships.

Contact Jen and Jess at 250-590-7572 or check out their website at [www.chaostocalm.ca](http://www.chaostocalm.ca). You can follow them on twitter and facebook too.

**Discovery  
Art Travel**



**Ceramics Excursions  
with Denys James**

**Crete/Greece  
Morocco  
Myanmar  
(Burma)**

**www.denysjames.com**  
TEL: 1-250-537-4906

**EarthWord  
Creative**  
— development services  
for artists & writers —

- ⇒ *consultation and information to  
create a presence on the web*
  - ⇒ *custom website design and  
implementation including WordPress*
  - ⇒ *social media assistance*
- ⇒ *print design & formatting from  
postcards to books and eBooks*

— contact Deb Clay —  
design@earthwordcreative.com  
www.earthwordcreative.com

*When you shop*

**PLEASE MENTION TO  
OUR ADVERTISERS**

that you saw their ad  
in the  
**Guild  
Newsletter!**

**Vancouver Island  
Potters Supply**

*Your top source for pottery supplies on Vancouver Island*

**Now 4 convenient ways to shop!**  
In person Monday to Friday 9 am- 4 pm  
By Phone 250-248-2314  
Email [vipsclay@hotmail.com](mailto:vipsclay@hotmail.com)  
Fax 250-248-2318

*Special Offer*  
*50% Discount on Shipping Charges*  
*for orders over 450 lbs*  
*now only \$40.00 for SVIPG members*

Visit our website at:  
[www.pottersupply.com](http://www.pottersupply.com)

#2 1009 Herring Gull Way  
Parksville, BC, V9P 2N1  
**Open Monday to Friday  
9 am – 4 pm**

